

Bearbeiter : Reinecke
 Industriegebiet Nord

Ergebnis

Zyklus : 001

Seite 1

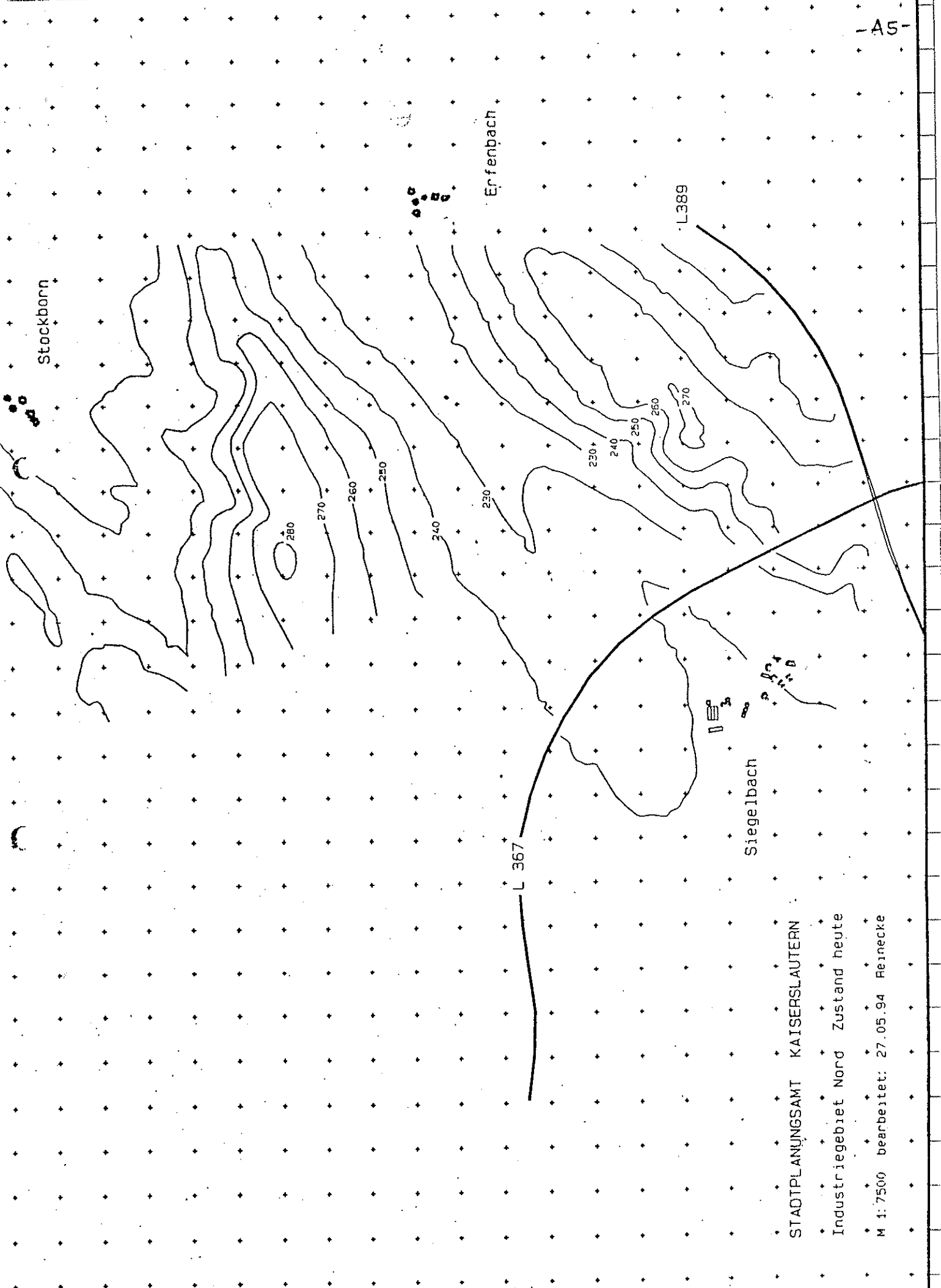
| Nr. | Punkt_name | X | Y | H | Pegel(t) | Pegel(n) | Pegel(s) |
|-----|---|----------|-----------|---------|------------------|----------|----------|
| 1 | Projekt : 9113 | | | | Datum : 27.05.94 | | |
| 2 | Laufdatei : 002 | | | | Uhrzeit : 07:54 | | |
| 3 | Rechenlauf: | | | | | | |
| 4 | Analyse ohne Industriegebiet | | | | | | |
| 5 | 9113;KP PK ASE1 ASP1 GLK1:5;S1 R1R2R3 H1H2H3H4H5H6/ | | | | | | |
| 6 | | | | | | | |
| 7 | | | | | | | |
| 8 | Flachsäcker1 A1 | 5296.282 | 82910.143 | 246.000 | 48.238 | 38.737 | 0.000 |
| 9 | Flachsäcker1 B1 | 5295.748 | 82902.699 | 246.000 | 48.378 | 38.878 | 0.000 |
| 10 | Flachsäcker1 C1 | 5314.249 | 82903.034 | 246.000 | 52.749 | 43.254 | 0.000 |
| 11 | Flachsäcker1 D1 | 5310.832 | 82907.523 | 246.000 | 53.488 | 43.988 | 0.000 |
| 12 | Flachsäcker1 E1 | 5302.426 | 82911.139 | 246.000 | 53.805 | 44.307 | 0.000 |
| 13 | Flachsäcker1 F1 | 5302.929 | 82916.550 | 246.000 | 53.627 | 44.129 | 0.000 |
| 14 | Flachsäcker1 G1 | 5299.543 | 82918.184 | 246.000 | 52.285 | 42.785 | 0.000 |
| 15 | Alter Bahnh. A1 | 5299.960 | 82863.369 | 246.500 | 51.871 | 42.371 | 0.000 |
| 16 | Alter Bahnh. A2 | 5299.960 | 82863.369 | 250.000 | 52.032 | 42.532 | 0.000 |
| 17 | Alter Bahnh. B1 | 5282.767 | 82868.978 | 246.500 | 51.611 | 42.111 | 0.000 |
| 18 | Alter Bahnh. B2 | 5282.767 | 82868.978 | 250.000 | 51.805 | 42.305 | 0.000 |
| 19 | Alter Bahnh. C1 | 5301.779 | 82858.456 | 246.500 | 51.497 | 42.004 | 0.000 |
| 20 | Alter Bahnh. C2 | 5301.779 | 82858.456 | 250.000 | 51.682 | 42.189 | 0.000 |
| 21 | Kästenberg81 A1 | 5312.836 | 82827.347 | 245.500 | 47.783 | 38.283 | 0.000 |
| 22 | Kästenberg81 B1 | 5322.837 | 82818.625 | 245.500 | 51.124 | 41.634 | 0.000 |
| 23 | Kästenberg81 C1 | 5321.862 | 82824.497 | 245.500 | 52.475 | 42.975 | 0.000 |
| 24 | Kästenberg79 A1 | 5350.022 | 82770.491 | 242.500 | 50.150 | 40.661 | 0.000 |
| 25 | Kästenberg79 B1 | 5349.794 | 82766.004 | 242.500 | 41.839 | 32.411 | 0.000 |
| 26 | Kästenberg79 C1 | 5337.053 | 82760.756 | 242.500 | 49.624 | 40.147 | 0.000 |
| 27 | Kästenberg79 D1 | 5358.407 | 82772.224 | 242.500 | 52.409 | 42.914 | 0.000 |
| 28 | Kästenberg77 A1 | 5341.132 | 82791.335 | 243.500 | 49.984 | 40.485 | 0.000 |
| 29 | Kästenberg77 B1 | 5337.178 | 82783.464 | 243.500 | 42.351 | 32.908 | 0.000 |
| 30 | Kästenberg77 C1 | 5348.807 | 82780.525 | 243.500 | 50.574 | 41.089 | 0.000 |
| 31 | Kästenberg77 D1 | 5348.684 | 82785.502 | 243.500 | 52.737 | 43.243 | 0.000 |
| 32 | Kästenberg75 A1 | 5349.182 | 82806.174 | 243.500 | 50.206 | 40.710 | 0.000 |
| 33 | Kästenberg75 B1 | 5352.220 | 82797.292 | 243.500 | 48.327 | 38.845 | 0.000 |
| 34 | Kästenberg75 C1 | 5356.749 | 82795.634 | 243.500 | 51.083 | 41.593 | 0.000 |
| 35 | Kästenberg75 D1 | 5357.773 | 82807.433 | 243.500 | 52.850 | 43.353 | 0.000 |
| 36 | Kästenberg73 A1 | 5371.690 | 82814.653 | 243.000 | 50.480 | 40.983 | 0.000 |
| 37 | Kästenberg73 A2 | 5371.690 | 82814.653 | 245.800 | 46.744 | 37.244 | 0.000 |
| 38 | Kästenberg73 B1 | 5378.771 | 82807.170 | 243.000 | 50.074 | 40.537 | 0.000 |
| 39 | Kästenberg73 B2 | 5378.771 | 82807.170 | 245.800 | 47.479 | 38.009 | 0.000 |
| 40 | Kästenberg73 C1 | 5384.133 | 82810.633 | 243.000 | 53.525 | 44.030 | 0.000 |
| 41 | Kästenberg73 C2 | 5384.133 | 82810.633 | 245.800 | 53.390 | 43.897 | 0.000 |
| 42 | Kästenberg73 D1 | 5377.052 | 82818.115 | 243.000 | 53.379 | 43.879 | 0.000 |
| 43 | Kästenberg73 D2 | 5377.052 | 82818.115 | 245.800 | 53.031 | 43.531 | 0.000 |
| 44 | Kästenberg71 A1 | 5389.158 | 82791.247 | 242.500 | 49.218 | 39.718 | 0.000 |
| 45 | Kästenberg71 A2 | 5389.158 | 82791.247 | 245.300 | 48.018 | 38.518 | 0.000 |
| 46 | Kästenberg71 B1 | 5392.034 | 82785.991 | 242.500 | 49.877 | 40.398 | 0.000 |
| 47 | Kästenberg71 B2 | 5392.034 | 82785.991 | 245.300 | 48.318 | 38.848 | 0.000 |
| 48 | Kästenberg71 C1 | 5397.231 | 82788.972 | 242.500 | 53.092 | 43.601 | 0.000 |
| 49 | Kästenberg71 C2 | 5397.231 | 82788.972 | 245.300 | 53.325 | 43.834 | 0.000 |
| 50 | Kästenberg71 D1 | 5394.355 | 82794.228 | 242.500 | 53.356 | 43.856 | 0.000 |
| 51 | Kästenberg71 D2 | 5394.355 | 82794.228 | 245.300 | 53.484 | 43.984 | 0.000 |
| 52 | Kästenb67/69 A1 | 5381.754 | 82753.357 | 242.000 | 48.287 | 38.821 | 0.000 |
| 53 | Kästenb67/69 A2 | 5381.754 | 82753.357 | 244.800 | 48.430 | 38.963 | 0.000 |
| 54 | Kästenb67/69 B1 | 5384.385 | 82754.279 | 242.000 | 50.949 | 41.483 | 0.000 |
| 55 | Kästenb67/69 B2 | 5384.385 | 82754.279 | 244.800 | 51.932 | 42.459 | 0.000 |

| Nr. | Punkt_name | X | Y | H | Pegel(t) | Pegel(n) | Pegel(s) |
|-----|-----------------|----------|-----------|---------|----------|----------|----------|
| 56 | Kästenb67/69 C1 | 5386.936 | 82755.212 | 242.000 | 50.706 | 41.232 | 0.000 |
| 57 | Kästenb67/69 C2 | 5386.936 | 82755.212 | 244.800 | 50.847 | 41.373 | 0.000 |
| 58 | Kästenb67/69 D1 | 5391.236 | 82767.642 | 242.000 | 52.831 | 43.343 | 0.000 |
| 59 | Kästenb67/69 D2 | 5391.236 | 82767.642 | 244.800 | 53.111 | 43.623 | 0.000 |
| 60 | Kästenb67/69 E1 | 5389.345 | 82770.900 | 242.000 | 52.898 | 43.398 | 0.000 |
| 61 | Kästenb67/69 E2 | 5389.345 | 82770.900 | 244.800 | 53.303 | 43.803 | 0.000 |
| 62 | Kästenb67/69 F1 | 5387.159 | 82772.225 | 242.000 | 53.045 | 43.546 | 0.000 |
| 63 | Kästenb67/69 F2 | 5387.159 | 82772.225 | 244.800 | 54.088 | 44.591 | 0.000 |
| 64 | Kästenb67/69 G1 | 5384.852 | 82773.570 | 242.000 | 51.805 | 42.310 | 0.000 |
| 65 | Kästenb67/69 G2 | 5384.852 | 82773.570 | 244.800 | 52.065 | 42.567 | 0.000 |
| 66 | Hohenzoll 23 A1 | 6477.670 | 83571.784 | 238.500 | 36.972 | 27.463 | 0.000 |
| 67 | Hohenzoll 23 A2 | 6477.670 | 83571.784 | 241.300 | 33.460 | 23.946 | 0.000 |
| 68 | Hohenzoll 23 B1 | 6475.247 | 83565.565 | 238.500 | 41.919 | 32.415 | 0.000 |
| 69 | Hohenzoll 23 B2 | 6475.247 | 83565.565 | 241.300 | 41.877 | 32.373 | 0.000 |
| 70 | Hohenzoll 23 C1 | 6481.201 | 83562.772 | 238.500 | 37.210 | 27.706 | 0.000 |
| 71 | Hohenzoll 23 C2 | 6481.201 | 83562.772 | 241.300 | 39.025 | 29.522 | 0.000 |
| 72 | Hohenzoll 26 A1 | 6490.786 | 83601.816 | 235.500 | 32.354 | 23.345 | 0.000 |
| 73 | Hohenzoll 26 A2 | 6490.786 | 83601.816 | 238.300 | 32.492 | 22.982 | 0.000 |
| 74 | Hohenzoll 26 B1 | 6487.986 | 83596.138 | 235.500 | 39.564 | 30.054 | 0.000 |
| 75 | Hohenzoll 26 B2 | 6487.986 | 83596.138 | 238.300 | 40.513 | 31.004 | 0.000 |
| 76 | Hohenzoll 28 A1 | 6466.099 | 83590.021 | 235.500 | 35.330 | 25.828 | 0.000 |
| 77 | Hohenzoll 28 A2 | 6466.099 | 83590.021 | 238.300 | 35.214 | 25.712 | 0.000 |
| 78 | Hohenzoll 28 B1 | 6463.782 | 83586.526 | 235.500 | 41.663 | 32.162 | 0.000 |
| 79 | Hohenzoll 28 B2 | 6463.782 | 83586.526 | 238.300 | 42.340 | 32.839 | 0.000 |
| 80 | Hohenzoll 28 C1 | 6466.711 | 83582.762 | 235.500 | 42.794 | 33.290 | 0.000 |
| 81 | Hohenzoll 28 C2 | 6466.711 | 83582.762 | 238.300 | 43.535 | 34.032 | 0.000 |
| 82 | Hohenzoll 28 D1 | 6474.598 | 83583.458 | 235.500 | 41.121 | 31.616 | 0.000 |
| 83 | Hohenzoll 28 D2 | 6474.598 | 83583.458 | 238.300 | 41.218 | 31.713 | 0.000 |
| 84 | Hohenzoll 30 A1 | 6444.279 | 83591.901 | 235.500 | 28.961 | 19.439 | 0.000 |
| 85 | Hohenzoll 30 A2 | 6444.279 | 83591.901 | 238.300 | 28.988 | 19.483 | 0.000 |
| 86 | Hohenzoll 30 B1 | 6440.694 | 83582.091 | 235.500 | 41.616 | 32.112 | 0.000 |
| 87 | Hohenzoll 30 B2 | 6440.694 | 83582.091 | 238.300 | 41.755 | 32.251 | 0.000 |
| 88 | Hohenzoll 30 C1 | 6446.177 | 83578.630 | 235.500 | 42.387 | 32.885 | 0.000 |
| 89 | Hohenzoll 30 C2 | 6446.177 | 83578.630 | 238.300 | 42.611 | 33.107 | 0.000 |
| 90 | Hohenzoll 30 D1 | 6450.471 | 83583.489 | 235.500 | 38.375 | 28.868 | 0.000 |
| 91 | Hohenzoll 30 D2 | 6450.471 | 83583.489 | 238.300 | 37.799 | 28.294 | 0.000 |
| 92 | Vorbeck 37 A1 | 6486.290 | 83546.681 | 241.500 | 0.000 | 0.000 | 0.000 |
| 93 | Vorbeck 37 A2 | 6486.290 | 83546.681 | 244.300 | 0.000 | 0.000 | 0.000 |
| 94 | Vorbeck 37 B1 | 6481.603 | 83545.003 | 241.500 | 0.000 | 0.000 | 0.000 |
| 95 | Vorbeck 37 B2 | 6481.603 | 83545.003 | 244.300 | 0.000 | 0.000 | 0.000 |
| 96 | Vorbeck 37 C1 | 6473.679 | 83540.859 | 241.500 | 41.976 | 32.471 | 0.000 |
| 97 | Vorbeck 37 C2 | 6473.679 | 83540.859 | 244.300 | 42.052 | 32.547 | 0.000 |
| 98 | Vorbeck 37 D1 | 6477.558 | 83536.364 | 241.500 | 40.675 | 31.171 | 0.000 |
| 99 | Vorbeck 37 D2 | 6477.558 | 83536.364 | 244.300 | 41.044 | 31.542 | 0.000 |
| 100 | Vorbeck 37 E1 | 6484.611 | 83533.550 | 241.500 | 37.133 | 27.624 | 0.000 |
| 101 | Vorbeck 37 E2 | 6484.611 | 83533.550 | 244.300 | 37.360 | 27.853 | 0.000 |
| 102 | Vorbeck 35 A1 | 6479.789 | 83525.471 | 244.500 | 27.817 | 18.317 | 0.000 |
| 103 | Vorbeck 35 A2 | 6479.789 | 83525.471 | 247.300 | 0.000 | 0.000 | 0.000 |
| 104 | Vorbeck 35 B1 | 6471.685 | 83523.383 | 244.500 | 42.403 | 32.902 | 0.000 |
| 105 | Vorbeck 35 B2 | 6471.685 | 83523.383 | 247.300 | 42.437 | 32.936 | 0.000 |
| 106 | Vorbeck 35 C1 | 6473.193 | 83517.126 | 244.500 | 43.770 | 34.268 | 0.000 |
| 107 | Vorbeck 35 C2 | 6473.193 | 83517.126 | 247.300 | 43.816 | 34.314 | 0.000 |
| 108 | Vorbeck 35 D1 | 6477.902 | 83513.033 | 244.500 | 42.450 | 32.947 | 0.000 |
| 109 | Vorbeck 35 D2 | 6477.902 | 83513.033 | 247.300 | 42.499 | 32.995 | 0.000 |
| 110 | Stockborn 1 A1 | 5971.309 | 84456.235 | 228.500 | 0.000 | 0.000 | 0.000 |

| Nr. | Punkt_name | X | Y | H | Pegel(t) | Pegel(n) | Pegel(s) |
|-----|----------------|----------|-----------|---------|----------|----------|----------|
| 111 | Stockborn 1 A2 | 5971.309 | 84456.235 | 231.300 | 0.000 | 0.000 | 0.000 |
| 112 | Stockborn 1 B1 | 5969.784 | 84453.524 | 228.500 | 21.454 | 11.818 | 0.000 |
| 113 | Stockborn 1 B2 | 5969.784 | 84453.524 | 231.300 | 26.698 | 17.025 | 0.000 |
| 114 | Stockborn 1 C1 | 5967.768 | 84450.560 | 228.500 | 0.000 | 0.000 | 0.000 |
| 115 | Stockborn 1 C2 | 5967.768 | 84450.560 | 231.300 | 0.000 | 0.000 | 0.000 |
| 116 | Stockborn 1 D1 | 5961.223 | 84448.911 | 228.500 | 0.000 | 0.000 | 0.000 |
| 117 | Stockborn 1 D2 | 5961.223 | 84448.911 | 231.300 | 0.000 | 0.000 | 0.000 |
| 118 | Stockborn 1 E1 | 5959.432 | 84444.914 | 228.500 | 35.463 | 25.275 | 0.000 |
| 119 | Stockborn 1 E2 | 5959.432 | 84444.914 | 231.300 | 35.543 | 25.956 | 0.000 |
| 120 | Stockborn 1 F1 | 5963.290 | 84440.500 | 228.500 | 35.998 | 26.429 | 0.000 |
| 121 | Stockborn 1 F2 | 5963.290 | 84440.500 | 231.300 | 36.080 | 26.512 | 0.000 |
| 122 | Stockborn 1 G1 | 5966.852 | 84439.006 | 228.500 | 35.493 | 25.931 | 0.000 |
| 123 | Stockborn 1 G2 | 5966.852 | 84439.006 | 231.300 | 35.577 | 26.016 | 0.000 |
| 124 | Stockborn 1 H1 | 5970.385 | 84442.725 | 228.500 | 35.098 | 25.533 | 0.000 |
| 125 | Stockborn 1 H2 | 5970.385 | 84442.725 | 231.300 | 35.552 | 25.992 | 0.000 |
| 126 | Stockborn 1 I1 | 5976.321 | 84447.641 | 228.500 | 30.969 | 21.392 | 0.000 |
| 127 | Stockborn 1 I2 | 5976.321 | 84447.641 | 231.300 | 30.421 | 20.857 | 0.000 |
| 128 | Stockborn 1 J1 | 5975.894 | 84453.010 | 228.500 | 31.865 | 22.270 | 0.000 |
| 129 | Stockborn 1 J2 | 5975.894 | 84453.010 | 231.300 | 0.000 | 0.000 | 0.000 |
| 130 | Stockborn 2 A1 | 5988.631 | 84465.817 | 228.000 | 0.000 | 0.000 | 0.000 |
| 131 | Stockborn 2 A2 | 5988.631 | 84465.817 | 230.800 | 0.000 | 0.000 | 0.000 |
| 132 | Stockborn 2 B1 | 5986.123 | 84463.446 | 228.000 | 19.628 | 10.074 | 0.000 |
| 133 | Stockborn 2 B2 | 5986.123 | 84463.446 | 230.800 | 25.526 | 15.994 | 0.000 |
| 134 | Stockborn 2 C1 | 5983.639 | 84461.086 | 228.000 | 0.000 | 0.000 | 0.000 |
| 135 | Stockborn 2 C2 | 5983.639 | 84461.086 | 230.800 | 0.000 | 0.000 | 0.000 |
| 136 | Stockborn 2 D1 | 5980.472 | 84460.216 | 228.000 | 0.000 | 0.000 | 0.000 |
| 137 | Stockborn 2 D2 | 5980.472 | 84460.216 | 230.800 | 0.000 | 0.000 | 0.000 |
| 138 | Stockborn 2 E1 | 5978.941 | 84460.095 | 228.000 | 0.000 | 0.000 | 0.000 |
| 139 | Stockborn 2 E2 | 5978.941 | 84460.095 | 230.800 | 0.000 | 0.000 | 0.000 |
| 140 | Stockborn 2 F1 | 5981.241 | 84451.618 | 228.000 | 35.862 | 24.244 | 0.000 |
| 141 | Stockborn 2 F2 | 5981.241 | 84451.618 | 230.800 | 34.340 | 24.734 | 0.000 |
| 142 | Stockborn 2 G1 | 5985.878 | 84449.712 | 228.000 | 36.510 | 26.951 | 0.000 |
| 143 | Stockborn 2 G2 | 5985.878 | 84449.712 | 230.800 | 36.569 | 27.011 | 0.000 |
| 144 | Stockborn 2 H1 | 5989.498 | 84450.026 | 228.000 | 37.928 | 28.358 | 0.000 |
| 145 | Stockborn 2 H2 | 5989.498 | 84450.026 | 230.800 | 37.967 | 28.398 | 0.000 |
| 146 | Stockborn 2 I1 | 5992.598 | 84450.103 | 228.000 | 35.350 | 25.772 | 0.000 |
| 147 | Stockborn 2 I2 | 5992.598 | 84450.103 | 230.800 | 35.424 | 25.847 | 0.000 |
| 148 | Stockborn 2 J1 | 5993.324 | 84455.360 | 228.000 | 0.000 | 0.000 | 0.000 |
| 149 | Stockborn 2 J2 | 5993.324 | 84455.360 | 230.800 | 0.000 | 0.000 | 0.000 |
| 150 | Stockborn 2 K1 | 5992.985 | 84460.130 | 228.000 | 22.487 | 12.947 | 0.000 |
| 151 | Stockborn 2 K2 | 5992.985 | 84460.130 | 230.800 | 25.499 | 15.952 | 0.000 |
| 152 | Stockborn 2 L1 | 5993.058 | 84464.005 | 228.000 | 25.756 | 16.256 | 0.000 |
| 153 | Stockborn 2 L2 | 5993.058 | 84464.005 | 230.800 | 0.000 | 0.000 | 0.000 |
| 154 | Stockborn 3 A1 | 6018.434 | 84480.810 | 227.500 | 28.950 | 19.277 | 0.000 |
| 155 | Stockborn 3 A2 | 6018.434 | 84480.810 | 230.300 | 30.202 | 20.540 | 0.000 |
| 156 | Stockborn 3 B1 | 6013.001 | 84468.917 | 227.500 | 35.021 | 25.446 | 0.000 |
| 157 | Stockborn 3 E2 | 6013.001 | 84468.917 | 230.300 | 35.201 | 25.621 | 0.000 |
| 158 | Stockborn 3 C1 | 6018.954 | 84467.831 | 227.500 | 35.139 | 25.556 | 0.000 |
| 159 | Stockborn 3 C2 | 6018.954 | 84467.831 | 230.300 | 35.202 | 25.620 | 0.000 |
| 160 | Stockborn 3 D1 | 6026.494 | 84475.189 | 227.500 | 0.000 | 0.000 | 0.000 |
| 161 | Stockborn 3 D2 | 6026.494 | 84475.189 | 230.300 | 0.000 | 0.000 | 0.000 |
| 162 | Stockborn 4 A1 | 5999.412 | 84501.372 | 228.500 | 10.138 | 0.000 | 0.000 |
| 163 | Stockborn 4 A2 | 5999.412 | 84501.372 | 231.300 | 10.248 | 0.000 | 0.000 |
| 164 | Stockborn 4 B1 | 5995.497 | 84490.238 | 228.500 | 32.149 | 22.573 | 0.000 |
| 165 | Stockborn 4 B2 | 5995.497 | 84490.238 | 231.300 | 35.114 | 25.529 | 0.000 |

| Nr. | Punkt_name | | X | Y | H | Pegel(t) | Pegel(n) | Pegel(s) |
|-----|-------------|----|----------|-----------|---------|----------|----------|----------|
| 166 | Stockborn 4 | C1 | 6004.538 | 84491.334 | 228.500 | 33.180 | 23.577 | 0.000 |
| 167 | Stockborn 4 | C2 | 6004.538 | 84491.334 | 231.300 | 35.065 | 25.495 | 0.000 |
| 168 | Stockborn 4 | D1 | 6004.000 | 84500.194 | 228.500 | 29.462 | 17.900 | 0.000 |
| 169 | Stockborn 4 | D2 | 6004.000 | 84500.194 | 231.300 | 0.000 | 0.000 | 0.000 |
| 170 | Stockborn 5 | A1 | 6022.747 | 84512.874 | 228.000 | 0.000 | 0.000 | 0.000 |
| 171 | Stockborn 5 | A2 | 6022.747 | 84512.874 | 230.800 | 0.000 | 0.000 | 0.000 |
| 172 | Stockborn 5 | B1 | 6020.554 | 84510.325 | 228.000 | 25.128 | 15.487 | 0.000 |
| 173 | Stockborn 5 | B2 | 6020.554 | 84510.325 | 230.800 | 26.176 | 16.524 | 0.000 |
| 174 | Stockborn 5 | C1 | 6018.556 | 84507.879 | 228.000 | 0.000 | 0.000 | 0.000 |
| 175 | Stockborn 5 | C2 | 6018.556 | 84507.879 | 230.800 | 0.000 | 0.000 | 0.000 |
| 176 | Stockborn 5 | D1 | 6017.917 | 84502.819 | 228.000 | 32.682 | 23.080 | 0.000 |
| 177 | Stockborn 5 | D2 | 6017.917 | 84502.819 | 230.800 | 34.917 | 25.297 | 0.000 |
| 178 | Stockborn 5 | E1 | 6027.414 | 84503.033 | 228.000 | 32.639 | 23.027 | 0.000 |
| 179 | Stockborn 5 | E2 | 6027.414 | 84503.033 | 230.800 | 34.895 | 25.306 | 0.000 |
| 180 | Stockborn 5 | F1 | 6029.183 | 84507.270 | 228.000 | 0.000 | 0.000 | 0.000 |
| 181 | Stockborn 5 | F2 | 6029.183 | 84507.270 | 230.800 | 0.000 | 0.000 | 0.000 |

Ergebnistabelle mit Leq für tags, nachts und sonder



STADTPLANUNGSAMT KAISERSLAUTERN
 Industriegebiet Nord Zustand heute
 M 1:7500 bearbeitet: 27.05.94 Reinecke

| Nr. | Punkt_name | X | Y | H | Pegel(t) | Pegel(n) | Pegel(s) |
|-----|--|----------|-----------|---------|------------------|----------|----------|
| 1 | Projekt : 9113 | | | | Datum : 27.05.94 | | |
| 2 | Laufdatei : 002 | | | | Uhrzeit : 10:11 | | |
| 3 | Rechenlauf: | | | | | | |
| 4 | Prognose mit Industriegebiet Teilplan A | | | | | | |
| 5 | 9113;KP PK ASE2 ASP2 GLK2:5;S2 R1R2R3 Q1Q2 H1H2H3H4H5H6/ | | | | | | |
| 6 | | | | | | | |
| 7 | | | | | | | |
| 8 | Flachsacker1 A1 | 5296.282 | 82910.143 | 246.000 | 50.893 | 41.333 | 31.134 |
| 9 | Flachsacker1 E1 | 5295.748 | 82902.699 | 246.000 | 50.967 | 41.414 | 30.675 |
| 10 | Flachsacker1 C1 | 5314.249 | 82903.034 | 246.000 | 54.846 | 45.352 | 9.184 |
| 11 | Flachsacker1 D1 | 5310.832 | 82907.523 | 246.000 | 55.767 | 46.247 | 31.354 |
| 12 | Flachsacker1 E1 | 5302.426 | 82911.139 | 246.000 | 55.906 | 46.409 | 14.347 |
| 13 | Flachsacker1 F1 | 5302.929 | 82916.550 | 246.000 | 55.726 | 46.230 | 11.655 |
| 14 | Flachsacker1 G1 | 5299.543 | 82918.184 | 246.000 | 54.586 | 45.063 | 30.552 |
| 15 | Alter Bahnh. A1 | 5299.960 | 82863.369 | 246.500 | 54.192 | 44.668 | 30.656 |
| 16 | Alter Bahnh. A2 | 5299.960 | 82863.369 | 250.000 | 54.434 | 44.901 | 32.356 |
| 17 | Alter Bahnh. B1 | 5282.767 | 82868.978 | 246.500 | 54.043 | 44.507 | 32.311 |
| 18 | Alter Bahnh. B2 | 5282.767 | 82868.978 | 250.000 | 54.253 | 44.697 | 32.490 |
| 19 | Alter Bahnh. C1 | 5301.779 | 82858.456 | 246.500 | 53.590 | 44.100 | 0.000 |
| 20 | Alter Bahnh. C2 | 5301.779 | 82858.456 | 250.000 | 53.775 | 44.285 | 0.000 |
| 21 | Kästenberg81 A1 | 5307.262 | 82819.045 | 245.500 | 49.767 | 40.213 | 29.418 |
| 22 | Kästenberg81 B1 | 5322.837 | 82818.625 | 245.500 | 53.215 | 43.729 | 0.000 |
| 23 | Kästenberg81 C1 | 5321.862 | 82824.497 | 245.500 | 54.724 | 45.207 | 29.477 |
| 24 | Kästenberg79 A1 | 5350.022 | 82770.491 | 242.500 | 52.457 | 42.948 | 29.787 |
| 25 | Kästenberg79 B1 | 5349.794 | 82766.004 | 242.500 | 44.030 | 34.619 | 15.969 |
| 26 | Kästenberg79 C1 | 5357.053 | 82760.756 | 242.500 | 51.736 | 42.265 | 19.171 |
| 27 | Kästenberg79 D1 | 5358.407 | 82772.224 | 242.500 | 54.655 | 45.145 | 29.684 |
| 28 | Kästenberg77 A1 | 5341.132 | 82791.335 | 243.500 | 52.327 | 42.801 | 29.155 |
| 29 | Kästenberg77 B1 | 5337.178 | 82783.464 | 243.500 | 44.579 | 35.132 | 17.779 |
| 30 | Kästenberg77 C1 | 5348.807 | 82780.525 | 243.500 | 52.667 | 43.138 | 11.651 |
| 31 | Kästenberg77 D1 | 5348.684 | 82785.502 | 243.500 | 54.954 | 45.448 | 28.965 |
| 32 | Kästenberg75 A1 | 5349.182 | 82806.174 | 243.500 | 52.566 | 43.041 | 29.755 |
| 33 | Kästenberg75 E1 | 5352.220 | 82797.292 | 243.500 | 50.465 | 40.989 | 17.802 |
| 34 | Kästenberg75 C1 | 5356.749 | 82795.634 | 243.500 | 53.189 | 43.691 | 0.000 |
| 35 | Kästenberg75 D1 | 5357.773 | 82807.433 | 243.500 | 55.148 | 45.630 | 31.421 |
| 36 | Kästenberg73 A1 | 5371.690 | 82814.653 | 243.000 | 52.934 | 43.399 | 31.526 |
| 37 | Kästenberg73 A2 | 5371.690 | 82814.653 | 245.800 | 49.534 | 39.961 | 30.813 |
| 38 | Kästenberg73 E1 | 5378.771 | 82807.170 | 243.000 | 52.165 | 42.684 | 10.355 |
| 39 | Kästenberg73 B2 | 5378.771 | 82807.170 | 245.800 | 49.550 | 40.094 | 0.000 |
| 40 | Kästenberg73 C1 | 5384.133 | 82810.633 | 243.000 | 55.620 | 46.128 | 0.000 |
| 41 | Kästenberg73 C2 | 5384.133 | 82810.633 | 245.800 | 55.482 | 45.993 | 0.000 |
| 42 | Kästenberg73 D1 | 5377.052 | 82818.115 | 243.000 | 55.643 | 46.125 | 30.978 |
| 43 | Kästenberg73 D2 | 5377.052 | 82818.115 | 245.800 | 55.315 | 45.795 | 31.141 |
| 44 | Kästenberg71 A1 | 5389.158 | 82791.247 | 242.500 | 51.597 | 42.066 | 28.986 |
| 45 | Kästenberg71 A2 | 5389.158 | 82791.247 | 245.300 | 50.485 | 40.944 | 29.055 |
| 46 | Kästenberg71 B1 | 5392.034 | 82785.991 | 242.500 | 52.030 | 42.551 | 23.868 |
| 47 | Kästenberg71 B2 | 5392.034 | 82785.991 | 245.300 | 50.419 | 40.959 | 18.487 |
| 48 | Kästenberg71 C1 | 5397.231 | 82788.972 | 242.500 | 55.183 | 45.696 | 0.000 |
| 49 | Kästenberg71 C2 | 5397.231 | 82788.972 | 245.300 | 55.416 | 45.929 | 0.000 |
| 50 | Kästenberg71 D1 | 5394.355 | 82794.228 | 242.500 | 55.586 | 46.072 | 29.900 |
| 51 | Kästenberg71 D2 | 5394.355 | 82794.228 | 245.300 | 55.715 | 46.200 | 30.017 |
| 52 | Kästenb67/69 A1 | 5381.754 | 82753.357 | 242.000 | 50.354 | 40.904 | 0.000 |
| 53 | Kästenb67/69 A2 | 5381.754 | 82753.357 | 244.800 | 50.497 | 41.047 | 0.000 |
| 54 | Kästenb67/69 B1 | 5384.385 | 82754.279 | 242.000 | 53.017 | 43.566 | 0.000 |
| 55 | Kästenb67/69 B2 | 5384.385 | 82754.279 | 244.800 | 54.005 | 44.546 | 0.000 |

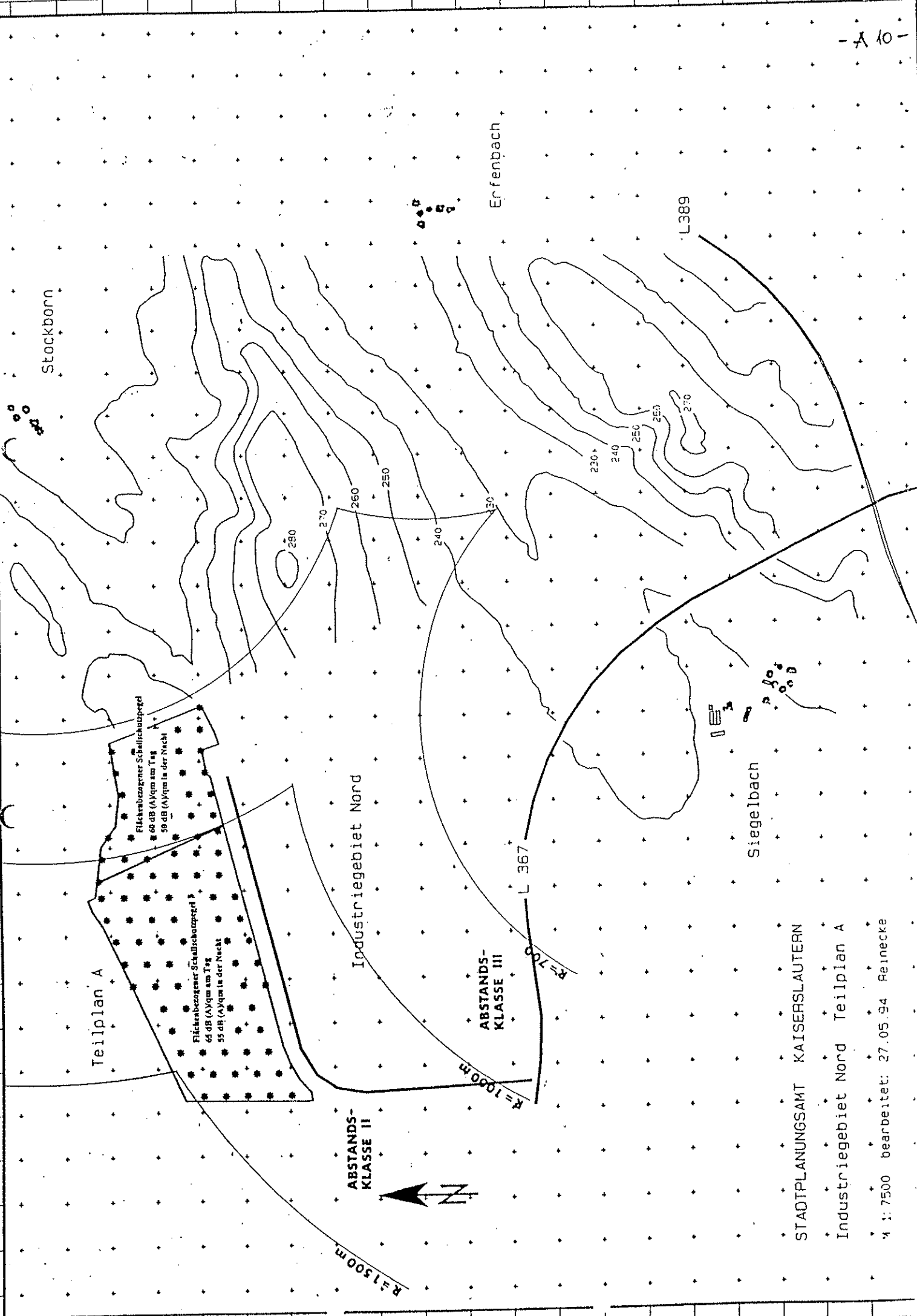
| Nr. | Punkt_name | X | Y | H | Pegel(t) | Pegel(n) | Pegel(s) |
|-----|-----------------|----------|-----------|---------|----------|----------|----------|
| 56 | Kästenb67/69 C1 | 5386.936 | 82755.212 | 242.000 | 52.781 | 43.319 | 0.000 |
| 57 | Kästenb67/69 C2 | 5386.936 | 82755.212 | 244.800 | 52.922 | 43.460 | 0.000 |
| 58 | Kästenb67/69 D1 | 5391.236 | 82767.642 | 242.000 | 54.923 | 45.439 | 12.515 |
| 59 | Kästenb67/69 D2 | 5391.236 | 82767.642 | 244.800 | 55.201 | 45.717 | 0.000 |
| 60 | Kästenb67/69 E1 | 5389.345 | 82770.900 | 242.000 | 55.117 | 45.604 | 29.109 |
| 61 | Kästenb67/69 E2 | 5389.345 | 82770.900 | 244.800 | 55.511 | 45.999 | 28.932 |
| 62 | Kästenb67/69 F1 | 5387.159 | 82772.225 | 242.000 | 55.150 | 45.651 | 16.579 |
| 63 | Kästenb67/69 F2 | 5387.159 | 82772.225 | 244.800 | 56.186 | 46.690 | 0.000 |
| 64 | Kästenb67/69 G1 | 5384.852 | 82773.570 | 242.000 | 54.062 | 44.551 | 29.183 |
| 65 | Kästenb67/69 G2 | 5384.852 | 82773.570 | 244.800 | 54.311 | 44.798 | 29.080 |
| 66 | Hohenzoll 23 A1 | 6477.670 | 83571.784 | 238.500 | 41.145 | 31.430 | 26.665 |
| 67 | Hohenzoll 23 A2 | 6477.670 | 83571.784 | 241.300 | 39.295 | 29.466 | 26.635 |
| 68 | Hohenzoll 23 B1 | 6475.247 | 83565.565 | 238.500 | 44.778 | 35.189 | 26.558 |
| 69 | Hohenzoll 23 B2 | 6475.247 | 83565.565 | 241.300 | 44.743 | 35.153 | 26.559 |
| 70 | Hohenzoll 23 C1 | 6481.201 | 83562.772 | 238.500 | 39.305 | 29.809 | 0.000 |
| 71 | Hohenzoll 23 C2 | 6481.201 | 83562.772 | 241.300 | 41.122 | 31.624 | 0.000 |
| 72 | Hohenzoll 26 A1 | 6490.786 | 83601.816 | 235.500 | 39.059 | 29.208 | 26.659 |
| 73 | Hohenzoll 26 A2 | 6490.786 | 83601.816 | 238.300 | 38.928 | 29.065 | 26.669 |
| 74 | Hohenzoll 26 B1 | 6489.709 | 83591.445 | 235.500 | 42.992 | 33.308 | 27.936 |
| 75 | Hohenzoll 26 B2 | 6489.709 | 83591.445 | 238.300 | 43.977 | 34.310 | 28.587 |
| 76 | Hohenzoll 28 A1 | 6466.099 | 83590.021 | 235.500 | 40.249 | 30.483 | 26.777 |
| 77 | Hohenzoll 28 A2 | 6466.099 | 83590.021 | 238.300 | 40.203 | 30.429 | 26.800 |
| 78 | Hohenzoll 28 B1 | 6463.782 | 83586.526 | 235.500 | 44.136 | 34.587 | 22.980 |
| 79 | Hohenzoll 28 B2 | 6463.782 | 83586.526 | 238.300 | 44.974 | 35.408 | 25.344 |
| 80 | Hohenzoll 28 C1 | 6466.711 | 83582.762 | 235.500 | 45.065 | 35.537 | 20.296 |
| 81 | Hohenzoll 28 C2 | 6466.711 | 83582.762 | 238.300 | 46.149 | 36.587 | 26.359 |
| 82 | Hohenzoll 28 D1 | 6474.598 | 83583.458 | 235.500 | 43.226 | 33.724 | 4.867 |
| 83 | Hohenzoll 28 D2 | 6474.598 | 83583.458 | 238.300 | 43.325 | 33.823 | 5.913 |
| 84 | Hohenzoll 30 A1 | 6444.279 | 83591.901 | 235.500 | 38.174 | 28.207 | 26.962 |
| 85 | Hohenzoll 30 A2 | 6444.279 | 83591.901 | 238.300 | 38.149 | 28.183 | 26.922 |
| 86 | Hohenzoll 30 B1 | 6440.694 | 83582.091 | 235.500 | 44.582 | 34.983 | 26.884 |
| 87 | Hohenzoll 30 B2 | 6440.694 | 83582.091 | 238.300 | 44.690 | 35.093 | 26.844 |
| 88 | Hohenzoll 30 C1 | 6446.177 | 83578.630 | 235.500 | 44.766 | 35.235 | 22.559 |
| 89 | Hohenzoll 30 C2 | 6446.177 | 83578.630 | 238.300 | 44.719 | 35.218 | 8.219 |
| 90 | Hohenzoll 30 D1 | 6450.471 | 83583.489 | 235.500 | 40.705 | 31.179 | 17.821 |
| 91 | Hohenzoll 30 D2 | 6450.471 | 83583.489 | 238.300 | 39.924 | 30.418 | 7.104 |
| 92 | Vorbeck 37 A1 | 6486.290 | 83546.681 | 241.500 | 36.740 | 26.691 | 26.503 |
| 93 | Vorbeck 37 A2 | 6486.290 | 83546.681 | 244.300 | 36.738 | 26.689 | 26.501 |
| 94 | Vorbeck 37 B1 | 6481.603 | 83545.003 | 241.500 | 40.141 | 30.100 | 29.945 |
| 95 | Vorbeck 37 B2 | 6481.603 | 83545.003 | 244.300 | 40.164 | 30.124 | 29.970 |
| 96 | Vorbeck 37 C1 | 6473.679 | 83540.859 | 241.500 | 44.816 | 35.230 | 26.492 |
| 97 | Vorbeck 37 C2 | 6473.679 | 83540.859 | 244.300 | 44.881 | 35.296 | 26.501 |
| 98 | Vorbeck 37 D1 | 6477.558 | 83536.364 | 241.500 | 42.786 | 33.273 | 0.000 |
| 99 | Vorbeck 37 D2 | 6477.558 | 83536.364 | 244.300 | 43.155 | 33.643 | 0.000 |
| 100 | Vorbeck 37 E1 | 6484.611 | 83533.550 | 241.500 | 39.250 | 29.728 | 0.000 |
| 101 | Vorbeck 37 E2 | 6484.611 | 83533.550 | 244.300 | 39.475 | 29.955 | 0.000 |
| 102 | Vorbeck 35 A1 | 6474.790 | 83525.547 | 244.500 | 36.635 | 26.567 | 26.381 |
| 103 | Vorbeck 35 A2 | 6474.790 | 83525.547 | 247.300 | 36.611 | 26.542 | 26.355 |
| 104 | Vorbeck 35 B1 | 6471.685 | 83523.383 | 244.500 | 45.166 | 35.508 | 26.397 |
| 105 | Vorbeck 35 B2 | 6471.685 | 83523.383 | 247.300 | 45.191 | 35.613 | 26.370 |
| 106 | Vorbeck 35 C1 | 6473.193 | 83517.126 | 244.500 | 46.363 | 36.803 | 26.402 |
| 107 | Vorbeck 35 C2 | 6473.193 | 83517.126 | 247.300 | 46.396 | 36.837 | 26.317 |
| 108 | Vorbeck 35 D1 | 6477.902 | 83513.033 | 244.500 | 44.553 | 35.049 | 0.000 |
| 109 | Vorbeck 35 D2 | 6477.902 | 83513.033 | 247.300 | 44.601 | 35.097 | 0.000 |
| 110 | Stockborn 1 A1 | 5971.309 | 84456.235 | 228.500 | 42.288 | 32.275 | 32.090 |

| Nr. | Punkt_name | X | Y | H | Pegel(t) | Pegel(n) | Pegel(s) |
|-----|----------------|----------|-----------|---------|----------|----------|----------|
| 111 | Stockborn 1 A2 | 5971.309 | 84456.235 | 231.300 | 40.283 | 30.263 | 29.964 |
| 112 | Stockborn 1 B1 | 5969.784 | 84453.524 | 228.500 | 44.477 | 34.479 | 34.251 |
| 113 | Stockborn 1 B2 | 5969.784 | 84453.524 | 231.300 | 43.562 | 33.547 | 33.195 |
| 114 | Stockborn 1 C1 | 5967.768 | 84450.560 | 228.500 | 44.598 | 34.579 | 34.386 |
| 115 | Stockborn 1 C2 | 5967.768 | 84450.560 | 231.300 | 45.352 | 35.335 | 35.018 |
| 116 | Stockborn 1 D1 | 5961.223 | 84448.911 | 228.500 | 43.300 | 33.284 | 33.004 |
| 117 | Stockborn 1 D2 | 5961.223 | 84448.911 | 231.300 | 41.999 | 31.978 | 31.594 |
| 118 | Stockborn 1 E1 | 5959.432 | 84444.914 | 228.500 | 43.124 | 33.239 | 31.433 |
| 119 | Stockborn 1 E2 | 5959.432 | 84444.914 | 231.300 | 42.527 | 32.661 | 30.477 |
| 120 | Stockborn 1 F1 | 5963.290 | 84440.500 | 228.500 | 43.234 | 33.364 | 31.365 |
| 121 | Stockborn 1 F2 | 5963.290 | 84440.500 | 231.300 | 42.596 | 32.750 | 30.290 |
| 122 | Stockborn 1 G1 | 5966.852 | 84439.006 | 228.500 | 39.821 | 30.065 | 24.927 |
| 123 | Stockborn 1 G2 | 5966.852 | 84439.006 | 231.300 | 37.856 | 28.238 | 12.452 |
| 124 | Stockborn 1 H1 | 5970.385 | 84442.725 | 228.500 | 40.286 | 30.468 | 27.130 |
| 125 | Stockborn 1 H2 | 5970.385 | 84442.725 | 231.300 | 38.593 | 28.854 | 20.600 |
| 126 | Stockborn 1 I1 | 5976.321 | 84447.641 | 228.500 | 42.153 | 32.139 | 30.988 |
| 127 | Stockborn 1 I2 | 5976.321 | 84447.641 | 231.300 | 32.922 | 23.259 | 10.684 |
| 128 | Stockborn 1 J1 | 5975.894 | 84453.010 | 228.500 | 41.224 | 31.269 | 29.942 |
| 129 | Stockborn 1 J2 | 5975.894 | 84453.010 | 231.300 | 0.000 | 0.000 | 0.000 |
| 130 | Stockborn 2 A1 | 5988.631 | 84465.817 | 228.000 | 41.237 | 31.225 | 31.045 |
| 131 | Stockborn 2 A2 | 5988.631 | 84465.817 | 230.800 | 39.774 | 29.767 | 29.633 |
| 132 | Stockborn 2 B1 | 5986.123 | 84463.446 | 228.000 | 43.060 | 33.041 | 32.798 |
| 133 | Stockborn 2 B2 | 5986.123 | 84463.446 | 230.800 | 42.770 | 32.751 | 32.320 |
| 134 | Stockborn 2 C1 | 5983.639 | 84461.086 | 228.000 | 42.424 | 32.412 | 32.199 |
| 135 | Stockborn 2 C2 | 5983.639 | 84461.086 | 230.800 | 43.814 | 33.804 | 33.644 |
| 136 | Stockborn 2 D1 | 5980.472 | 84460.216 | 228.000 | 42.732 | 32.713 | 32.477 |
| 137 | Stockborn 2 D2 | 5980.472 | 84460.216 | 230.800 | 41.755 | 31.738 | 31.547 |
| 138 | Stockborn 2 E1 | 5978.941 | 84460.095 | 228.000 | 42.722 | 32.715 | 32.590 |
| 139 | Stockborn 2 E2 | 5978.941 | 84460.095 | 230.800 | 41.313 | 31.305 | 31.131 |
| 140 | Stockborn 2 F1 | 5981.241 | 84451.618 | 228.000 | 41.521 | 31.621 | 29.795 |
| 141 | Stockborn 2 F2 | 5981.241 | 84451.618 | 230.800 | 40.628 | 30.763 | 28.152 |
| 142 | Stockborn 2 G1 | 5985.878 | 84449.712 | 228.000 | 41.669 | 31.657 | 28.060 |
| 143 | Stockborn 2 G2 | 5985.878 | 84449.712 | 230.800 | 39.451 | 29.773 | 18.239 |
| 144 | Stockborn 2 H1 | 5989.498 | 84450.026 | 228.000 | 42.941 | 33.161 | 29.533 |
| 145 | Stockborn 2 H2 | 5989.498 | 84450.026 | 230.800 | 43.690 | 33.877 | 30.924 |
| 146 | Stockborn 2 I1 | 5992.598 | 84450.103 | 228.000 | 38.094 | 28.447 | 16.729 |
| 147 | Stockborn 2 I2 | 5992.598 | 84450.103 | 230.800 | 38.168 | 28.522 | 10.851 |
| 148 | Stockborn 2 J1 | 5993.324 | 84455.360 | 228.000 | 40.652 | 30.643 | 30.561 |
| 149 | Stockborn 2 J2 | 5993.324 | 84455.360 | 230.800 | 0.000 | 0.000 | 0.000 |
| 150 | Stockborn 2 K1 | 5992.985 | 84460.130 | 228.000 | 32.093 | 21.750 | 18.236 |
| 151 | Stockborn 2 K2 | 5992.985 | 84460.130 | 230.800 | 30.447 | 20.474 | 14.198 |
| 152 | Stockborn 2 L1 | 5993.058 | 84464.005 | 228.000 | 39.287 | 29.238 | 28.314 |
| 153 | Stockborn 2 L2 | 5993.058 | 84464.005 | 230.800 | 0.000 | 0.000 | 0.000 |
| 154 | Stockborn 3 A1 | 6013.900 | 84478.702 | 227.500 | 40.991 | 31.026 | 30.473 |
| 155 | Stockborn 3 A2 | 6013.900 | 84478.702 | 230.300 | 40.116 | 30.163 | 29.427 |
| 156 | Stockborn 3 B1 | 6013.001 | 84468.917 | 227.500 | 42.768 | 32.853 | 30.913 |
| 157 | Stockborn 3 B2 | 6013.001 | 84468.917 | 230.300 | 42.629 | 32.740 | 30.854 |
| 158 | Stockborn 3 C1 | 6023.488 | 84469.938 | 227.500 | 37.745 | 28.098 | 15.138 |
| 159 | Stockborn 3 C2 | 6023.488 | 84469.938 | 230.300 | 37.804 | 28.158 | 13.179 |
| 160 | Stockborn 3 D1 | 6026.494 | 84475.189 | 227.500 | 0.000 | 0.000 | 0.000 |
| 161 | Stockborn 3 D2 | 6026.494 | 84475.189 | 230.300 | 0.000 | 0.000 | 0.000 |
| 162 | Stockborn 4 A1 | 5994.959 | 84499.098 | 228.500 | 40.768 | 30.752 | 30.610 |
| 163 | Stockborn 4 A2 | 5994.959 | 84499.098 | 231.300 | 39.960 | 29.941 | 29.769 |
| 164 | Stockborn 4 B1 | 5995.497 | 84490.238 | 228.500 | 41.867 | 31.918 | 30.783 |
| 165 | Stockborn 4 B2 | 5995.497 | 84490.238 | 231.300 | 42.068 | 32.194 | 30.017 |

| Nr. | Punkt_name | X | Y | H | Pegel(t) | Pegel(n) | Pegel(s) |
|-----|----------------|----------|-----------|---------|----------|----------|----------|
| 166 | Stockborn 4 C1 | 6004.538 | 84491.334 | 228.500 | 37.336 | 27.574 | 22.476 |
| 167 | Stockborn 4 C2 | 6004.538 | 84491.334 | 231.300 | 37.644 | 28.019 | 15.167 |
| 168 | Stockborn 4 D1 | 6006.274 | 84495.741 | 228.500 | 40.999 | 30.949 | 30.497 |
| 169 | Stockborn 4 D2 | 6006.274 | 84495.741 | 231.300 | 18.140 | 7.694 | 0.000 |
| 170 | Stockborn 5 A1 | 6022.747 | 84512.874 | 228.000 | 39.683 | 29.660 | 29.476 |
| 171 | Stockborn 5 A2 | 6022.747 | 84512.874 | 230.800 | 39.799 | 29.779 | 29.590 |
| 172 | Stockborn 5 B1 | 6020.554 | 84510.325 | 228.000 | 41.441 | 31.396 | 30.919 |
| 173 | Stockborn 5 B2 | 6020.554 | 84510.325 | 230.800 | 41.277 | 31.263 | 30.801 |
| 174 | Stockborn 5 C1 | 6018.556 | 84507.879 | 228.000 | 42.281 | 32.219 | 31.847 |
| 175 | Stockborn 5 C2 | 6018.556 | 84507.879 | 230.800 | 42.743 | 32.726 | 32.544 |
| 176 | Stockborn 5 D1 | 6017.917 | 84502.819 | 228.000 | 41.089 | 31.133 | 29.362 |
| 177 | Stockborn 5 D2 | 6017.917 | 84502.819 | 230.800 | 42.404 | 32.511 | 30.649 |
| 178 | Stockborn 5 E1 | 6027.414 | 84503.033 | 228.000 | 36.624 | 26.858 | 21.484 |
| 179 | Stockborn 5 E2 | 6027.414 | 84503.033 | 230.800 | 37.410 | 27.790 | 14.823 |
| 180 | Stockborn 5 F1 | 6029.183 | 84507.270 | 228.000 | 0.000 | 0.000 | 0.000 |
| 181 | Stockborn 5 F2 | 6029.183 | 84507.270 | 230.800 | 0.000 | 0.000 | 0.000 |

Ergebnistabelle mit Leg für tags, nachts und sonder

Bezirksregierung Rheinhessen-Pfalz
 Zur Entscheidung
 vom 21. Dez. 1994
 Az.: 35/405-03 Ka 0/Si 11



Teilplan A

Flächenbezogener Schallhörschutzpegel
 60 dB (AV)qm am Tag
 59 dB (AV)qm in der Nacht

Flächenbezogener Schallhörschutzpegel
 64 dB (AV)qm am Tag
 55 dB (AV)qm in der Nacht

ABSTANDS-
KLASSE II

ABSTANDS-
KLASSE III

Industriegebiet Nord

Stockborn

Erfenbach

Siegelbach

L 389

L 367

R=1500m

R=1000m

R=700



STADTPLANUNGSAMT KAISERSLAUTERN

Industriegebiet Nord Teilplan A

M 1:7500 bearbeitet: 27.05.94 Feinecke